

OBJECTIVE

TAXMantra is a component-based object-oriented solution for TAX applications. It is aimed at producing TAX business components through a flexible and rapid assembly of software components. TAXMantra components are so generic that they can be easily configured for any requirement.

Using public domain knowledge of TAX systems and Technical expertise in a diverse range of environments, has made it possible in developing the TAXMantra components as an off the shelf product easily configurable to any TAX requirements. The TAX components are CORBA compliant but can be easily made Microsoft COM / DCOM compliant.

SOLUTION

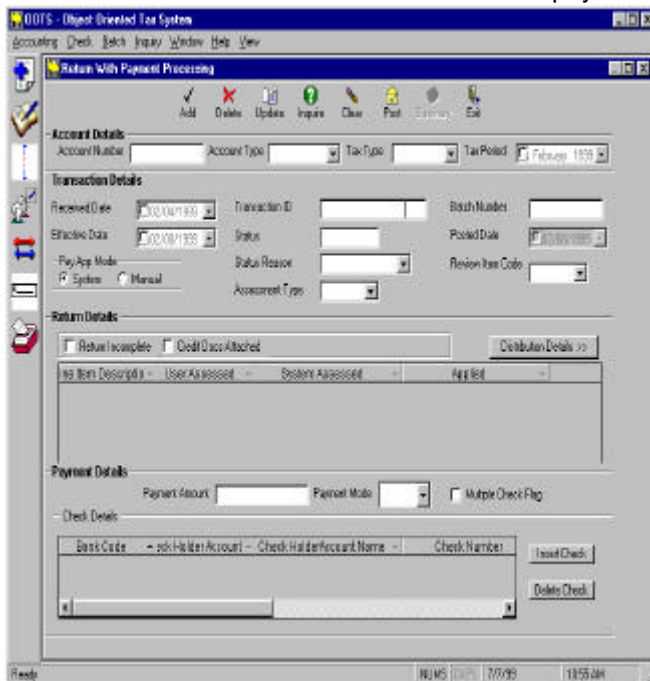
TAXMantra provides a complete and integrated solution for various Tax types. Some of the modules covered are:

◆ Registration provides

- ✓ Maintenance of Taxpayer accounts
- ✓ Discontinuing accounts
- ✓ Reinstating accounts
- ✓ Maintenance of account relationships
- ✓ Merging two accounts

◆ Return Processing provides

- ✓ On-line entry and posting of returns
- ✓ Assessment of liability, penalty & interest
- ✓ Transfer of money between accounts
- ✓ Automatic and manual distribution of payments



- received
- ✓ Direct posting of returns
- ◆ **Payment Processing provides**
 - ✓ Entry of payments and documents from taxpayers
 - ✓ Balancing and closing of batches
 - ✓ Splitting of checks between multiple accounts and returns
- ◆ **Refund Processing provides**
 - ✓ Approval and denial of refund requests
 - ✓ Multiple approval levels for refunds
- ◆ **Extension & Exoneration provides**
 - ✓ Process extensions for returns and payments
 - ✓ Abatement of complete and partial taxpayer liabilities
- ◆ **Case Management provides**
 - ✓ Initiation and tracking of cases against taxpayers
 - ✓ Assignment and transfer of cases
 - ✓ Automatic generation and staging of cases
 - ✓ Maintenance of complete case history
- ◆ **Security provides**
 - ✓ Maintenance of authorized users
 - ✓ Assignment of user permissions
 - ✓ Automatic maintenance of access logs

TAXMantra provides a user-friendly interface, some of the features provided are:

- ◆ Drop down list
- ◆ Tool bars
- ◆ Color coding
- ◆ ToolTip text

CONFIGURATION

Configuration, not **Customization** is the goal of TAXMantra. TAXMantra components are so generic that they can be easily configured for any requirement. Configuration of TAXMantra requires the user to specify the preferences at the time of product installation.

TAXMantra configuration allows users to pick and choose tax components based on their requirements. It provides dynamic and flexible configuration of the following:

- ◆ Business Process
- ◆ Liability and P&I calculation algorithms
- ◆ Payment application rules
- ◆ Level of approvals for various work items
- ◆ Return Line Items
- ◆ System Parameters
- ◆ Color based on usage

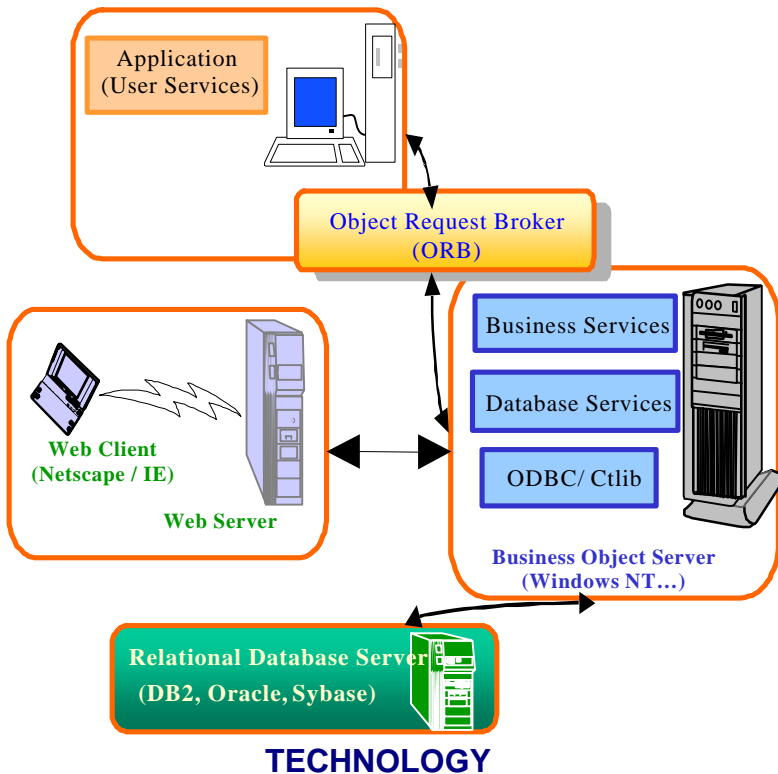
- ◆ Business Attributes – length, range, default value, mandatory/optional, system generated/user enterable

APPROACH

TAXMantra uses Rational Rose toolset for implementing object oriented software engineering.

The Common Object Request Broker Architecture (CORBA) defines a framework for developing object-oriented, distributed applications. CORBA is being used to make N-tiered distributed architecture. CORBA is an established open distributed object-computing infrastructure being standardized by the Object Management Group (OMG).

The TAX components are developed in C++, with CORBA encapsulation, thus making the components interoperable. These TAX components can be made Microsoft COM/DCOM compliant.



TECHNOLOGY

Component based N-Tier Architecture

- ◆ Windows 95, 98, NT Client
- ◆ Windows NT application server
- ◆ CORBA
- ◆ WEB enabled



Environment

- ◆ Oracle, Sybase, SQL Server, DB2, Informix
- ◆ ODBC / RDBMS Native drivers connectivity
- ◆ Normalized data model
- ◆ Choice of User Services – Visual Basic, Power Builder, Visual C++
- ◆ Business Object Components – CORBA enabled C++ components

BENEFITS

- ◆ Reduce the development cycle and cost
- ◆ Increase productivity through model driven development and risk elimination
- ◆ Increase software quality through business focus development
- ◆ Have better maintainability and software reuse through a focus on software architecture and components
- ◆ Have better scalability
- ◆ Help in containment of complexity
- ◆ Provide opportunity for massive parallel development
- ◆ Ensure stable component definitions also encourage flexibility.
- ◆ Provide reduced time to delivery.

For inquiries in India:

S R Das
Corporate Specialist Group – Public Sector
Tata Infotech Limited
NEPZ, NOIDA
U.P. 201 305
India
☎: (91-11) 914562356
Fax: (91-11) 914567635
Email: swades.das@tatainfotech.com

For inquiries in USA:

Ashwini Chharia
Director, Business Development
Tata Infotech Limited
7918 Jones Branch Drive
Suite 850
McLean, VA 22102, USA
☎: (703) 734 9456 – Ext. 226
Fax: (703) 7349290
Email: ashwini.chharia@tatainfotech-usa.com

Visit our web site at: www.tatainfotech.com

Tata Infotech Ltd. acknowledges all registered brand names and trademarks worldwide